

**EUSTIS HIGH
SCHOOL
PANTHER BAND
HANDBOOK
2010-2011**

**Eustis High School
1300 E. Washington Avenue
Eustis, Florida
32726
(352) 357-5874
www.eustishighband.com**

**Al Larry – Principal
Matthew Flenner – Director of Bands**





TABLE OF CONTENTS

Words from the director.....page 3

Curriculum offered.....page 4

Financial obligations.....page 5

Music facility.....page 7

Attendance policy.....page 8

Grading policy.....page 9

Performance procedures.....page 10

Travel.....page 11

Uniform regulations.....page 12

Student officers.....page 13

Awards.....page 14

Band boosters / Chaperones.....page 15

Finale.....page 16

Important dates.....page 17

Forms.....page 19



A WORD FROM THE DIRECTOR

Dear Parents and Music Program Members:

Welcome to the Eustis High School Marching Band, Colorguard, Concert Band and Jazz Band. This will prove to be a great year for the music program, and I encourage all parents to become active in their student's musical experience by chaperoning, working together with the band boosters, helping at band camp / performances / evaluations, and in any other way that will benefit your child. This handbook contains information that will be used and abided by throughout the year.

It is very important that students and parents are aware of the information contained in this book. Please take the time to read the information and acknowledge its receipt by signing the forms located in the appendix and returning them to me by the required dates.

I hope the rules and information in this handbook will help students and parents or guardians to understand what is expected of the members of the Eustis High School performing groups. Also, the band now has a new website: www.eustishighband.com. Along with the announcements made in class, this will be the best source of information for both students and parents. Please check it periodically.

Our intention is to provide a positive, safe and mature educational environment for everyone involved.

Thank you in advance for all your help and support this year,

Mr. Flenner
Director of Bands



CURRICULUM CURRENTLY OFFERED



Panther Marching Band

Marching Band is made up of all wind, percussion and auxiliary (colorguard) students enrolled in the Marching Band Class during the Fall Semester. This group performs at all football games (see attached schedule), pep rallies, parades, and FBA Marching Music Performance Assessment.

EHS Symphonic Band

The symphonic band is made up of all students (winds and percussion) enrolled in band during the Spring Semester. This group will continue to focus on fundamentals of music, and perform at several concerts, FBA District Concert Band MPA, as well as select spring Marching Band performances.

Panther Vocal Ensemble

This class is offered at the main campus and is a semester long class. It is a performance ensemble that allows students to gain knowledge, understanding and respect of the elements of music such as melody, harmony, rhythm, texture, etc. No previous musical training is required.

Panther Jazz Ensemble

The Jazz Ensemble is made up of the usual instrumentation. This group may hold auditions in the event that too many students are registered for the class. This is a select group and will be expected to perform **often** at school and throughout the community.

Members will be expected to adjust their schedules to accommodate these performances.

FINANCIAL OBLIGATIONS

BAND FEES: The fee structure for the 2010-2011 band seasons is as follows:

- Marching Band only- \$225.00
- Jazz Band and/or Concert Band - \$50.00 each

The *Marching band fee* is due by August 9th, 2010. An extension of the deadline is given for families with multiple members. One student must be paid by the August deadline. The second or third student(s) must be paid by October 10th. A payment plan may be worked out with the director.

All unpaid band fees from last year must be paid in addition to the current band fees. You will not be permitted to participate until previous outstanding debts are paid. Please keep any receipts you are given in case of a discrepancy. Payments will not be accepted the day of a performance/function!

Band fees cannot cover all the operating expenses of the Music Program, but they are crucial in giving us a good start. Fees help to cover such items as:

| | | |
|--------------------------------------|----------------------------------|-------------------------------------|
| • Uniform Rental / Cleaning / Repair | • Office supplies | • Trailer insurance and maintenance |
| • FBA registration | • Band banquet and Awards | • Music and drill |
| • Band Camp Expenses | • Instrument purchase and repair | • Staff and clinicians |

SHOES: Marching Band members will need to purchase black marching shoes for their uniform. You will not be able to perform without them (excluding students with documented medical reasons.) The cost is approximately \$25.00. A representative will be on hand **August 4th at 8am**, and you will be able to purchase shoes at that time. More detailed information will be given to you during that week. These shoes are yours to keep and may be reused each year.

STICKS / MALLETS / MOUTHPIECES: Percussionists are expected to have the appropriate sticks and mallets for their ensemble and instrument. This may include, but is not limited to: marching snare sticks, tenor mallets, a set of 4 marimba/vibe mallets and drum set sticks. Wind players will be asked to purchase a specific ligature or mouthpiece. Certain sticks, mallets and mouthpieces *may* be provided by the music department.

DRESS CLOTHES: For certain performances, the Marching Band *may* wear show shirts (provided by the music program) and jeans. The concert band will wear “concert dress”. This is defined as the white button down band shirt, with black dress pants. Correct dress shoes and long black socks should be worn. No sneakers or sandals. Girls may wear an open toe shoe if appropriate. Concert band and jazz band students will have to purchase a button down band shirt. The shirts are available for purchase through the music program. The approximate cost will be \$25.00, and the shirt is yours to keep and can be reused each year.

AUDITION & NOMINATION BANDS / S&E: Please keep in mind when auditioning for any state, county, and district bands, as well as solo and ensemble festival, and any other “nomination” bands or festivals (such as tri-state or festival of winds), that additional costs will be incurred (including, but not limited to: audition fees, room and board, travel, etc.) **These individual costs cannot be covered by the EHS Music Program, or the Band Boosters.**

MUSIC FACILITY

The band room is provided for our benefit and should be treated with the utmost care and respect. We have our own rest rooms and lockers. You are expected to keep these clean at all times. Please dispose of trash in the proper place. Chairs and stands should be stacked neatly and returned to the proper area. Instruments should be put in the instrument room, lockers, or percussion cabinet at the end of each rehearsal and the doors closed. **No food or drink is allowed in the bandroom at any time.** The exception is a bottle of water with a secure lid during rehearsal, or during special occasions when the band is providing food.

Entrance into the band director's office is prohibited without permission from Band Director. The phone in the office is not available for personal use (excluding calling home after a rehearsal).

The band room will only be open for a maximum of 30 minutes before or after a rehearsal or performance. The band director / Eustis High School will not be responsible for students remaining on campus before or after that time.

Do not enter the band room when the director is not present, unless specifically asked to do so by the director, chaperones, band boosters, student leaders, or school administration. If the doors are locked, you may knock to see if someone is in the bandroom, but do NOT bang or kick the doors to illicit a response.

Vandalism with regard to the music facility or instruments will **NOT BE TOLERATED**. Violators WILL be referred to the administration, and held financially responsible for any damages.

LOCKERS:

Everyone will have the opportunity to rent a band locker for \$3.00 per year.

- Students are not to share lockers.
- Students are responsible for any damages to locks and lockers.
- Food, drinks or candy may not be kept in the lockers.
- No graffiti or stickers should be placed on the lockers.
- Do not remove locks from the lockers. They are property of EHS band boosters.
- Keep lockers closed and locked when not in use.
- We are not responsible for anything missing from your locker if it is not locked.

ATTENDANCE

Please understand that band is a co-curricular activity and attendance at performances and after school rehearsals is mandatory. There are NO excused absences. The only exceptions are extreme emergencies as defined by the Lake County School Board attendance policy. Students with these extenuating circumstances will be handled on a case-by-case basis, and will be expected to provide proper documentation. EHS athletes are given certain exceptions, but any student athlete should see the Band Director ASAP (and most definitely BEFORE any conflicts) to discuss scheduling.

Students are expected to keep a calendar or personal planner with all band dates included. Doctor appointments, vacations and other appointments should be scheduled on days we do not have a rehearsal or performance. In the event that an extra performance or rehearsal must be added, a student has 48 hours after the announcement to bring any conflict to the director's attention to avoid an unexcused absence. Any absence from rehearsal *may* disqualify the student from performing at the next scheduled event.

Any student who is excused from a performance or rehearsal will be expected to complete a writing assignment as defined by the director.

During school rehearsal hours we will follow the tardy and attendance policy as defined by Eustis High School and the Lake County School Board. Students are expected to be in their seats with their instrument/music/pencil/materials ready to play when the bell rings. **The bandroom is defined at the main part of the music building where rehearsal takes place. The foyer, restrooms and outside courtyards are NOT considered part of the bandroom.**

After school rehearsals are from **5:30 – 8:00 PM on Tuesday nights throughout the entire school year for both Marching Band (fall) and Concert/Jazz Band (spring)**. Sectionals will be held once a week from 1:30pm-2:30pm for different sections (at the director/section leader's discretion). Never assume any Tuesday night rehearsal is cancelled! If a rehearsal starts on the football field, or in another remote location, the student is expected to be in his/her spot, with instrument/music/materials at the proper start time. This is commonly referred to as "*Downbeat*". Being in the bandroom getting your instrument, in the restroom, or walking to the field when rehearsal begins is considered tardy. Never assume a rehearsal is cancelled due to bad weather.

Often we will rehearse outside on the football field during class time in the fall. It is recommended that you keep an extra set of clothes/sneakers in your band locker if you wish to change into more suitable clothing.

It is the student's responsibility to be at rehearsal on time. **Lack of transportation or work is not an acceptable excuse.**

GRADING POLICY

Rehearsals – 25%

All rehearsals are mandatory as defined by the attendance policy. The amount of weight each rehearsal holds will be defined by the number per grading period. This number will vary. Missing a rehearsal will result in a grade of 50%. Being tardy to a rehearsal, or not completely fulfilling your musical obligations during rehearsal will result in a grade of 85% or lower. Other disciplinary actions may also occur as outlined in the attendance policy. Students that miss rehearsals due to an EHS sports function are handled on a case-by-case basis.

Performances – 25%

All performances are mandatory as defined by the attendance policy. The amount of weight each performance holds will be defined by the number per grading period. This number will vary. Students violating any rules or procedures will not be allowed to perform.

Participation – 25%

Everyone will begin the grading period with 100% in Participation. You will lose points for such things as: not playing during rehearsal, poor rehearsal etiquette, not having materials/instrument, being tardy, eating/drinking in class, disruptive behavior, etc. Each infraction will subtract 5% from your total participation grade.

Playing tests – 25%

Periodic music tests on show music, scales, exercises and technique/warm-ups will take place. These may be either individual, or in a group setting. Be prepared at all times to play ANYTHING you have been given! You are responsible for having your material playable and or memorized as appropriate. A practice log may be required as part of your playing grade. More detailed information will be given when the school year begins.

If you feel you have received a grade in error, please see me **with specific calculations and documentation** as to what you believe your grade to be. Simply asking “Why did I get an 80% in band?” or saying “I came to every rehearsal.” is not enough!



PERFORMANCE PROCEDURES

Instruments should be cleaned, polished, oiled/greased, and in proper working order.

You are responsible for damage to school instruments beyond normal wear and tear.

The band seating area in the bleachers is for performing members, the director and chaperones ONLY!

A football game is a performance for us, much like it is for the football team. Family and friends will not be permitted to visit with you at this time. Please do not attempt to yell to them from across the band seating area. Traditionally we take the 3rd quarter off, and you can socialize at that point. DO NOT walk to the opposing team's side of the stadium during 3rd quarter break! You should be back in your position, in uniform, with 1:00 remaining on the clock. NO EXCEPTIONS!

Use of the restroom will be restricted to the 3rd quarter break.

NEVER GO ANYWHERE ALONE! If it becomes necessary for you to leave the group, you must be accompanied by a booster, chaperone, or the director.

Stay in your seat/block/section during the game.

No individual playing in the stands. We will do EVERYTHING as a group (sit, stand, cheer, play, etc.)

There will be NO public displays of affection during any band performance, including during breaks, downtime, etc. Violators will fall under the Eustis High School Student Code of Conduct.

CHAPERONES, BAND BOOSTERS, AND BAND OFFICERS ARE AN EXTENSION OF THE DIRECTOR AND ARE WORKING FOR ME DIRECTLY. THEY WILL BE TREATED WITH THE UPMOST RESPECT. WITHOUT THEM WE WOULD NOT BE ABLE TO FUNCTION IN THE CAPACITY WE NEED TO!

No negative comments towards another band will be allowed. "Clean your own house."

Public performances, especially football games, are the most visible time for the Music Program. Please use common sense at all times. Think before you speak or act...the walls have ears!

You are not released from a performance until dismissed by the director, chaperones, band boosters, or officers.

TRAVEL

All Lake County School Board, and Eustis High School rules and regulations are in effect during travel.

Students must have a “**medical form**”, “**insurance form**” and “**student travel permission form**” on file in order to travel, or participate outside of the classroom with the music program. These forms, as well as a performance schedule, can be found in the back of this handbook, or on the band website: www.eustishighband.com

Students will be assigned a bus and may not change busses. A sign up sheet may be used in some cases. Attendance will be taken.

Students should stay on the bus until dismissed by the director or chaperone. Please exit the bus in full uniform, unless otherwise instructed.

All band students are required to ride the bus to and from performances. Students may prearrange rides home with a parent or guardian that is on record with the school, under extenuating circumstances. A written parental request must be provided to the director **48 hours in advance**. Notes the day of, or during a performance will not be considered! Rides with anyone who is under 18 will not be permitted. Persons picking up a student should present themselves to the director at the time of release. You are responsible for making sure your instrument and uniform are returned to the band room, and that you inform your bus chaperone that you will not be returning on the bus.

No food or drink is allowed on the busses. Please adhere by the bus driver’s rules.

There will be no public displays of affection while traveling on the bus. Violators will fall under the Eustis High School Student Code of Conduct.

Walkmans, iPods, and CD players will only be allowed with headphones.

Instruments that travel on the bus should be properly cased.

Everyone is expected to help load and unload the trailer. A Band Officer may select a loading crew. No one is dismissed until everything is unloaded and stored, and you are released by the director.

Possession of alcohol, tobacco or narcotics is forbidden, and violators will be turned over to administrative and legal authorities.



UNIFORM REGULATIONS

Uniforms will be handed out prior to a performance. Please make sure you have your correct uniform and parts. Do not let anyone else wear your uniform. You are responsible for making sure your uniform is placed and hung properly after each performance.

There will be a uniform inspection prior to each performance. This will count towards your participation grade. Students not dressed properly will not be able to perform.

If your uniform is in need of some repair or special attention, you should notify a chaperone immediately. Any alterations will be handled by a designated band parent. You are responsible for lost or damaged uniform parts.

Band shirts must be worn under your marching uniform. They will be provided by the music program.

No jewelry or watches can be worn at any time in uniform. Exceptions are: wedding rings, anything that is part of the colorguard costume, religious items that are not displayed, or anything assigned by the director. Cell phones may not be displayed or used while in full uniform.

Long PLAIN black socks must be worn with the marching uniform.

You must remain in full uniform unless instructed to do otherwise. Usually during the game, we will remove our shakos (uniform hats) and unbutton our collars while playing in the stands. Each section should develop a uniformed way of putting down their hats, jackets and instruments when appropriate.

The uniform must be worn properly at all times. There is a correct way to carry your shako and jacket when not being worn. We will cover this before the first performance. Shakos should never be carried by the strap or worn backwards!

Use caution when inserting and removing plumes. They are fragile, and the sockets on the shako can come loose.

No eating, drinking (except water) or chewing gum while in uniform. When we break during 3rd quarter, we will remove our jackets so you can eat. This is called being “in halves”. Jackets must be turned inside out when being placed on the bleachers, and should be done properly and uniformly!

At times the Marching Band will wear band shirts and jeans for a performance, and the concert band will wear “concert dress”. Please see the Dress Clothes heading under the Financial Obligations section of this handbook for more information.

STUDENT OFFICERS



Although these officers are generally in command during the fall semester, they may be called upon at any time during the school year. All officers report directly to the director, and should be treated as such. **Any officer not fulfilling his or her duties will be dismissed from that position at the discretion of the director.**

PERCUSSION / GUARD / BRASS / WOODWIND CAPTAIN

Act as section leaders, and assist the director in maintaining good discipline, technique, fundamentals, standards, spirit and pride throughout the Music Program. They can hold mandatory sectionals if needed.

DRUM MAJORS

Same as above, but formally command the band in the stands, and on the marching field.

BAND CAPTAIN

This is the highest officer of the band program. Duties are the same as above, but they also act as coordinator between the performers, student officers, music staff, chaperones, band boosters and director. In some cases they act as assistant to the Band Director.

QUARTERMASTERS

These officers are primarily in charge of proper wearing, maintenance and upkeep of the band uniforms, as well as other equipment maintenance and loading/unloading of the band trailer.

ADMINISTRATIVE LIEUTENANT

This officer is primarily in charge of office duties, maintenance and upkeep of the music library, passing out and filing music, etc.

BAND AWARDS

FIRST YEAR BAND CERTIFICATE – Given to any student who has completed one or more semesters with any Eustis High School Music Program during the course of one school year.

BAND LETTERS – Given to any student who has completed two or more semesters with any Eustis High School Music Program during the course of two school years.

THIRD YEAR PATCH AND PIN – Given to any student who has completed three or more semesters with any Eustis High School Music Program during the course of three school years.

FOUR YEAR BAND PLAQUE - Given to any student who has completed four or more semesters with any Eustis High School Music Program during the course of four school years.

JAZZ BAND PATCH - Given to the current school years Jazz Band Members.

LOUIS ARMSTRONG JAZZ AWARD – Given to the Most Outstanding Jazz Band Performer.

PATRICK GILMORE AWARD – Given to the Most Outstanding Concert Band Performer.

JOHN PHILIP SOUSA AWARD – Given to the Most Outstanding Senior Bandsmen.

TRI-M – Eustis High School is a chapter of the TRI-M Music society. Each year, a select group of students will be inducted into this club. You can see one of your band officers for more details.



EUSTIS HIGH SCHOOL BAND BOOSTERS

The EHS Band Boosters, Inc. is a non-profit group of parents and community members that support the Music Programs at Eustis High School. The purpose of the boosters is to assist the band director in enhancing the total music experience for the students by:

- Providing a forum for students, parents, teachers, and the community to communicate with the band director ideas relating to the music program.
- Offering ways for students and parents to offset some of the costs associated with joining and participating in the Music Program.
- Choosing, organizing, and managing fund raising opportunities.
- Providing chaperones for bus trips and performances.
- Organizing an end of the year banquet to acknowledge the accomplishments of students throughout the year.
- Assisting the director in improving the overall Music Program.

Public school funding is extremely inadequate to provide the materials and personnel required to build and maintain a fulfilling music program. Each year, the Band Boosters succeed in raising thousands of dollars to supplement these funds. Please help us by supporting the Band Booster Organization. You can contact the Band Boosters, or find more information on their general business meetings (held on the first Thursday of every month) on the website: www.eustishighband.com. I urge you all to get involved!

CHAPERONES

Due to Florida High School Athletic Association (FHSAA) and School Board regulations, any parent who wishes to chaperone must be fingerprinted by the Lake County School Board, and submit background check information, **WITHOUT EXCEPTION.**

More details will be provided during band camp, and the first few weeks of school.



FINALE

Being a member of the Eustis High School Music Program is a fun and rewarding experience. As the year progresses, much of the information in this handbook will be more clearly defined as each performance and rehearsal dictates.

Being in a High School Music Program will differ greatly than a Middle School Program. Most of our classes are performance ensembles, which mean that most of our class time is spent on ensemble techniques, and preparing for performances. You need to be more prepared as an individual than you may be used to, as there is little time for individualized instruction. A tuning chart and fingering chart of your instrument will be required. **For these reasons it is strongly recommended that you take private lessons to focus on the needs of the individual musician.**

Failure to adhere to ANY of the rules and regulations outlined in this handbook may result in disciplinary action such as:

- Lowering of a student's grade.
- In school disciplinary actions such as detentions and office referrals.
- Losing your 3rd quarter privileges.
- Being sent home from a rehearsal or performance.
- Not being allowed to perform with the ensemble.
- Being removed from the program.

As always, please feel free to contact me if you have any questions or concerns.

| | |
|------------|--|
| Band Room: | (352) 357-5874 |
| Email: | director@eustishighband.com |
| Website: | www.eustishighband.com |

2010-2011 IMPORTANT DATES

****This is a partial list. Please check the website for the most current schedule****

2010 FOOTBALL SCHEDULE

| | | |
|--------------------|------------------|------------|
| Week 1 (9/3) | Mt. Dora | Away |
| Week 2 (9/10) | Bishop Moore | Home |
| Week 3 (9/17) | East Ridge | Home |
| Week 4 (9/24) | Dunnellon | Away |
| Week 5 (10/1) | Tavares | Homecoming |
| Week 6 (10/8) | Leesburg | Home |
| Week 7 (10/15) | Crystal River | Away |
| Week 8 (10/22) | Hernando | Away |
| Week 9 (10/29) | Nature Coast | Home |
| Week 10 (11/5) | Citrus | Away |
| Playoff Game (11/) | | TBA |
| Playoff Game (11/) | | TBA |
| Playoff Game (12/) | | TBA |
| Playoff Game (12/) | | TBA |
| Playoff Game (12/) | | TBA |

Other Performance Dates

(Many dates cannot be determined until information from other sources is released.)

- All-State Auditions - (9/18 or 9/25/2010) Mt. Dora M.S.
 - Marching MPA - (11/6/10) Leesburg H.S.
- District 19 Honor Band Auditions - (11/30/10) Belleview H.S.
 - Christmas Parade - TBA
 - Winter Concert – (12/10/10) EHS Auditorium
- District 19 Honor Concert Band - (1/27-29/2011) South Lake H.S.
 - Jazz MPA - (2/17/11) LSCC
 - Solo and Ensemble - (2/18-19/2011) THS
 - Washington Day Parade – TBA
 - Rehearse-a-thon for Concert Band - TBA
- HS Concert MPA - (3/4 and 3/5/2011) East Ridge H.S.
 - Lakeside Jazz Festival - TBA (April 2011)
 - Spring Concert – TBA
 - State S & E – TBA
 - Graduation - TBA

FORMS

The following pages contain forms that need to be completed and turned in to the band director before you can travel/perform with the band. They must all be handed in at one time (stapled or paper-clipped together, with all necessary copies and information) or they will not be accepted. They can also be found on the website (www.eustishighband.com).

- HANDBOOK RECEIPT AND ACKNOWLEDGEMENT FORM
- 2010-2011 EHS BAND INFORMATION SHEET – Should be filled out by ALL members, regardless of the number of years of participation in the program. EMS Band members who completed this form during the end of the previous school year, should do so again, as this copy is used for a different purpose
- STUDENT TRAVEL PERMISSION FORM – Allows the student to travel with the EHS music program to performances, or on other official business. A calendar of events is located in this handbook.
- MEDICAL INFORMATION AND RELEASE FORM
- INSURANCE INFORMATION FORM – **Please provide a copy of insurance card as stated on the form.** This form cannot be accepted without it!
- OPTIONAL MEDIA OPT OUT FORM – From time to time, we like to post pictures of the band/music program, and acknowledge student accomplishments by name on the Eustis High School Music Program Website. **IF YOU DO NOT WANT YOUR STUDENTS NAME OR LIKENESS USED, PLEASE FILL OUT THIS FORM!** By not filling out this form, you agree that your student's name/likeness may appear on the EHS Music Program Website. We will never post any private or confidential information about students. Our website is NOT part of the Lake County School Board, or Eustis High School website. It is independently owned and operated by the EHS Band Boosters, and Director of Bands, for the purpose of disseminating information.

I understand the names and photos will be used for informational and instructional purposes only and will not be used to generate a profit or for any other commercial purposes. I have not been compensated nor will I seek compensation for the photos. I release the Eustis High School Music Program from responsibility should a third party violate the terms of this release. I understand the Eustis High School Music Program website is NOT part of the Lake County School Board website, or the Eustis High School website. It is independently owned and operated by the EHS Band Boosters, and Director of Bands, for the above stated purpose.

2010-2011 EUSTIS HS BAND INFORMATION SHEET

STUDENT INFO

Name _____

Email _____

Cell Phone _____

Grade (2010/2011 school year) _____

Instrument(s) Played _____

Shirt size: XS S M L XL XXL

PARENT / GUARDIAN INFO

Name(s) _____

Mailing Address _____

Email _____

Home Phone _____

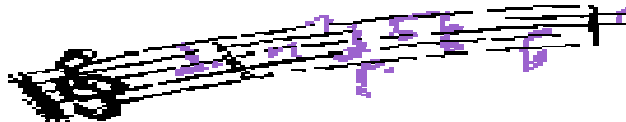
Cell Phone _____

Please rate the best way to contact you with band information (rate 1-4):

___ snail mail ___ e-mail ___ home phone ___ cell phone

Would you be interested in chaperoning any band functions? Y N

Do you have any special skills that would benefit the band program: (nurse, truck driver, seamstress, accounting, maintenance/repair, web design, publicity, fund raising etc.): _____



MEDICAL INFORMATION AND RELEASE FORM
Eustis High School Band

Students Name (Last, First) _____

Sex _____ Date of Birth _____

Name of Parent/Guardian _____

Home Phone _____ Business Phone(s) _____

Home Address _____

Emergency Contact Name/Address/Phone _____

Does Student Have School Insurance? _____ Type _____

Parent/Guardian Insurance Company Name & Policy # _____

Military Dependent? _____ Military ID Number _____

Indicate any problems you have or have had with the following. Use Back of This Form For Explanations.

- | | | |
|------------------------------|---------------------------|----------------------------|
| _____ Epilepsy | _____ Rheumatic Fever | _____ Heart Palpitations |
| _____ Dizziness/Fainting | _____ Kidney, Urinary | _____ Frequent Colds |
| _____ Ear, Eye, Nose, Throat | _____ Asthma, Bronchitis | _____ Hay Fever |
| _____ Stomach Trouble | _____ Jaundice, Hepatitis | _____ Diabetes |
| _____ Bee Sting Allergy | _____ Food Allergies | _____ Medication Allergies |

List Any Medications You Are Currently Taking _____

Family Physician _____ Phone _____

Alternate Physician _____ Phone _____

NOTICE: By law, a parent cannot consent in advance to any and all manners of emergency care. It is understandable that in cases other than the need for immediate emergency treatment, the attending physician may defer treatment pending parent's express permission to administer specific professional services.

IN AN EMERGENCY THE SCHOOL HAS MY PERMISSION TO CALL MY FAMILY PHYSICIAN OR ANOTHER PHYSICIAN IF MY FAMILY PHYSICIAN OR I CANNOT BE CONTACTED.

Signature of Parent/Guardian _____

Date _____

ALL INFORMATION PROVIDED WILL BE TREATED AS CONFIDENTIAL

INSURANCE INFORMATION FORM
Lake County Schools – Tavares, Florida

Proof of Insurance (copy) must be attached to this form. If insurance is no longer valid, it is the responsibility of the parent(s) or guardian(s) to notify the school.

KNOW ALL MEN BY THESE PRESENT, that I/We _____
and _____, the parent(s) or guardian(s) of
(student name) _____, a student of EUSTIS HIGH SCHOOL of the Lake
County Public School System, do hereby waive, relinquish, remise and release the District School Board of
Lake County from any claim or cause of action which may arise as a result of my/our said minor child to
wit (student name) _____ participation with the EUSTIS HIGH SCHOOL MUSIC
PROGRAM of the public school system of Lake County, insofar as I/We have elected to assume said risk,
I/We have insured myself/ourselves against said risk. My/Our insurance carrier is
(name) _____. (Please notate if none.)

I/We further relieve and release said District School Board of Lake County from any liability in its failure
to carry insurance upon my/our said minor child, to wit (students name) _____
while he/she shall be engaged in the EUSTIS HIGH SCHOOL MUSIC PROGRAM of said public school
system.

TWO WITNESSES (18 years of age+) OR SCHOOL AUTHORITY FOR VERIFICATION

Signature of Parent/Guardian _____

Date _____

Witness #1 _____

Date _____

Witness #2 _____

Date _____

OR

School Authority _____

Date _____

**STUDENT TRAVEL PERMISSION FORM
2010-2011**

As legal guardian of _____ I hereby give permission for my
(Student name)

student to travel with the Eustis High School Music Program to any scheduled performances or functions throughout the 2010-2011 school year.

Print Student Name: _____

Print Guardian Name: _____

Sign Guardian Name: _____

Media OPT-OUT Form
Eustis High School Music Department

I **DO NOT** give permission for my son/daughter to have their name, photograph, or likeness appear on the Eustis High School Music Program website (www.eustishighband.com) in recognition of their participation in the Eustis High School Music Program.

Print Student Name _____

Parent/Guardian Signature _____

Date _____

Acknowledgement of Receipt of the Eustis High School Music Program Handbook

I have received a copy of the 2010-2011 EHS Band Program Handbook, and understand the enclosed rules, regulations and responsibilities.

STUDENT NAME _____

STUDENT SIGNATURE _____

PARENT/GUARDIAN NAME _____

PARENT/GUARDIAN SIGNATURE _____

DATE _____